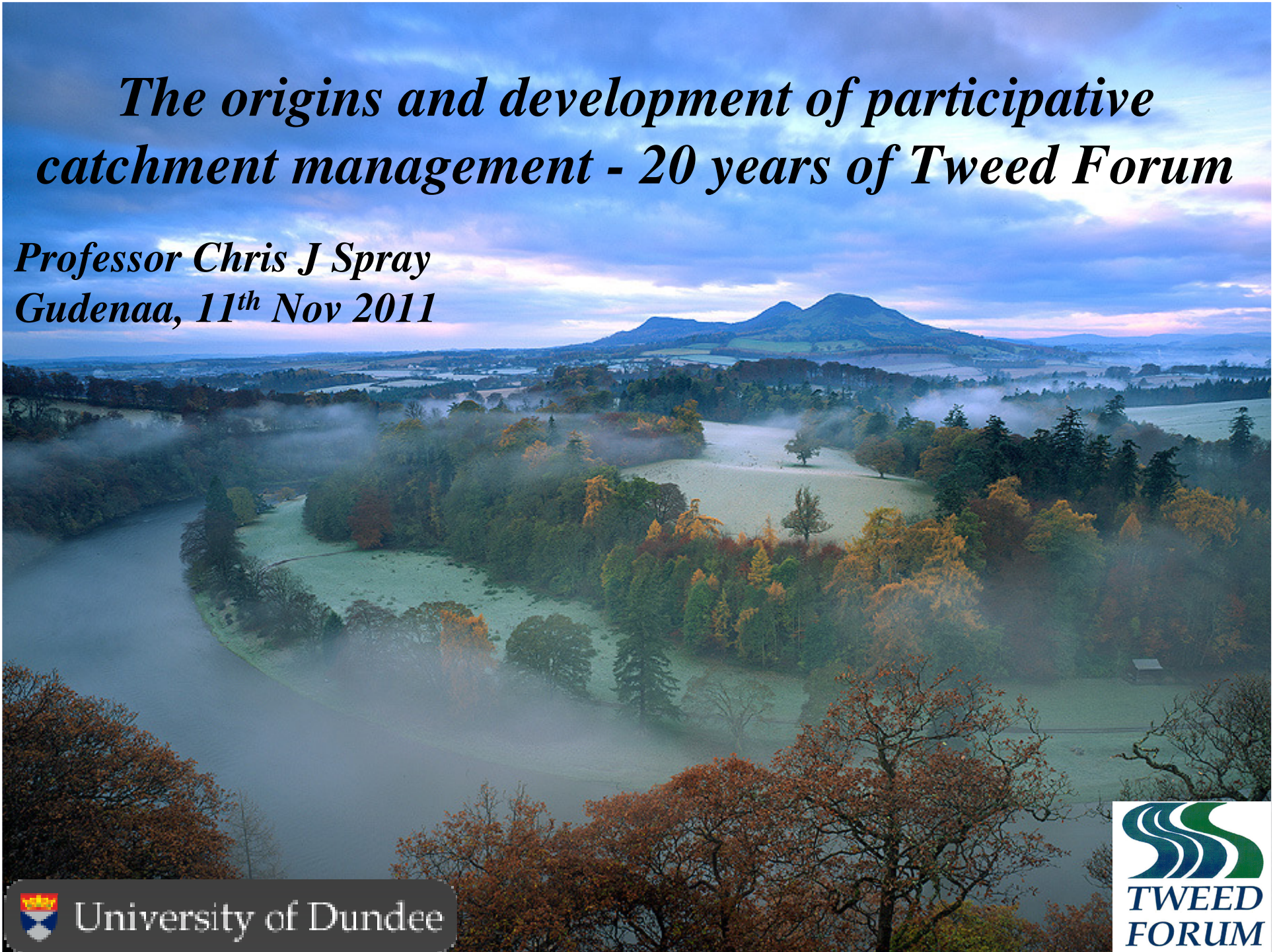


The origins and development of participative catchment management - 20 years of Tweed Forum

*Professor Chris J Spray
Gudena, 11th Nov 2011*



University of Dundee

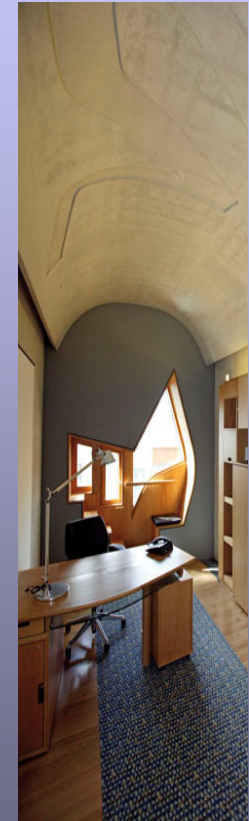
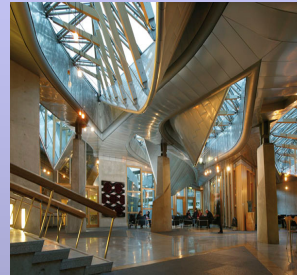


Clear legal framework in Scotland for river management and protection:

- **Globally** – Convention on Biological Diversity; RAMSAR Convention on migratory waterfowl

- **European** – Water Framework Directive; Floods Directive, Habitats Directive; Wild Birds Directive

- **Nationally** – Water Environment Water Services Act; Nature Conservation (Scotland) Act; Floods Risk Management (Scotland) Act; Climate Change Act



Major changes in the way we view Rivers, Catchments and Communities

- ...*the need to take a **catchment approach** to river management that transcends individual state and regional laws & policies;*
- ...*the need to understand catchments as **sources – pathways – receptors** with water flows connecting up and down stream*
- ...*the realisation of **multiple benefits and multiple stakeholders**, increasingly around delivery of **ecosystem services***
- ...*the need to **involve people with different skills and knowledge** - economists, biologists, planners, land managers, policy-makers, regulators, governments, farmers, foresters, anglers....*
- ...*the importance of **local communities** and the rise of **stakeholder participation**.*

The Tweed Catchment

River Tweed length: 156 kms

Catchment: 5,000 sq km

Scotland (84%): England (16%)

Mainly agricultural & valley towns

130,000 pop., tourism, farming (sheep & cereals), Salmon, Rugby, Tweed woollens



The Tweed - Landscape characteristics



The Tweed - conservation interests

River - Otter, Salmon, Lampreys, Water Crowfoot (Ranunculus) beds, beetle assemblages of River gravels

Estuary - Mute swans, Turnstone, Redshank



History of Management

- top down sector interests (1)

FISHERY management dominates – Salmon

Fishery Acts: 1857, 1859 & 1969

•Tweed Commission established 1807

Since 2006, River Tweed Commissioners role:

the general preservation and increase of Salmon, Sea Trout, Trout and other freshwater fish in the River Tweed and its tributaries, and in particular with the regulation of fisheries, the removal of nuisances and obstructions and the prevention of illegal fishing.

81 Commissioners - 38 elected by the Fishery Proprietors, 43 appointed by the Local authorities, of which 23 are from local angling clubs and 20 from independent interests.

Over 12,000 salmon caught/year

c. 500 jobs

c. £18 million to local economy



Tweed Foundation 1983

Habitat & stock monitoring and enhancement

History of Management

- top down sector interests (2)

NATURE CONSERVATION interests: - river channel species focus

Main river, all tributaries and estuary have gained site protection through European and national legislation

Nature Conservancy Scotland - Scottish Natural Heritage

Site of Special Scientific Interest 1976

Special Areas of Conservation 2005

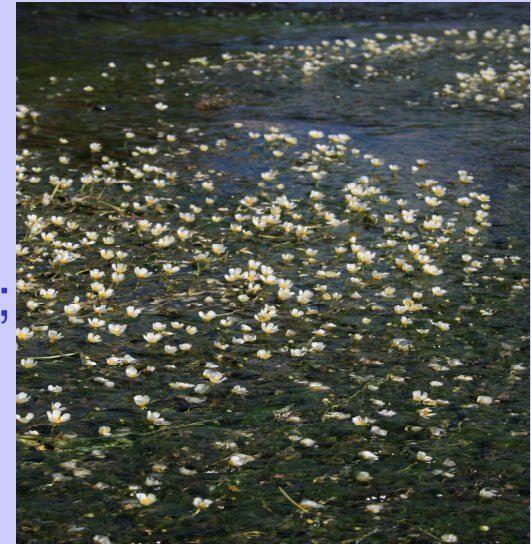
River: - Atlantic Salmon, 3 species of Lamprey, Otter, Ranunculus beds; Beetle assemblages of river gravels;

Estuary: - Turnstone, Redshank, Mute swans.

WATER QUALITY: - chemistry focus

Point source pollution, then diffuse agricultural pollution

Tweed River Purification Board – Scottish Environment Protection Agency



The Evolution of Tweed Forum

The “Yellow Digger” in the river...



Tweed Forum owes its existence to a single event, at a single location - the ultimate “Bottom up” origin.

Tweed Commissioners

Scottish Natural Heritage

Tweed River Purification Board

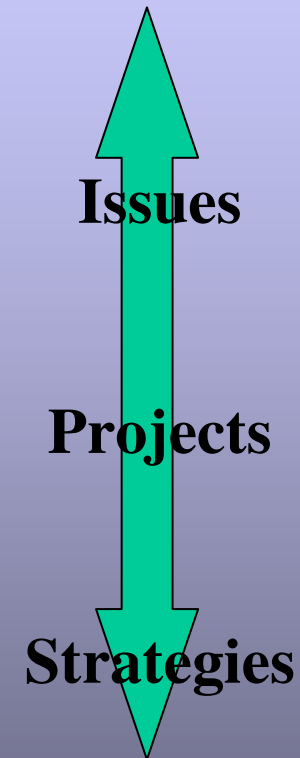
The Development of Tweed Forum

Three Phases:

(1) 1991 – 1999: the **Forum**

(2) 1999 – 2008: the **Limited company** (and the **Catchment Management Plan**)

(3) 2008 - the **Stakeholder “institution”**



Increasing engagement with statutory bodies and the community

Increasing scale of ambition and connections

Phase 1 – the Forum (1991 – 1999)

Loose association and reactive “talking shop”:

- Co-ordination of activities, knowledge exchange, clarification
- Cross-border representation from outset
- Voluntary, flexible membership, made up of local Tweed based environmental, regulatory and planning organisations
- Increasing membership groups

Deliveries:

- Technical notes – e.g. use of “*midstream*” herbicide near water courses
- Tweed Fact Pack – who is responsible for what?
- Resource directory
- Advisory notes – e.g. Canoeists and Fishermen
- Working protocol for undertaking river works

Phase 2 – the limited company (a)

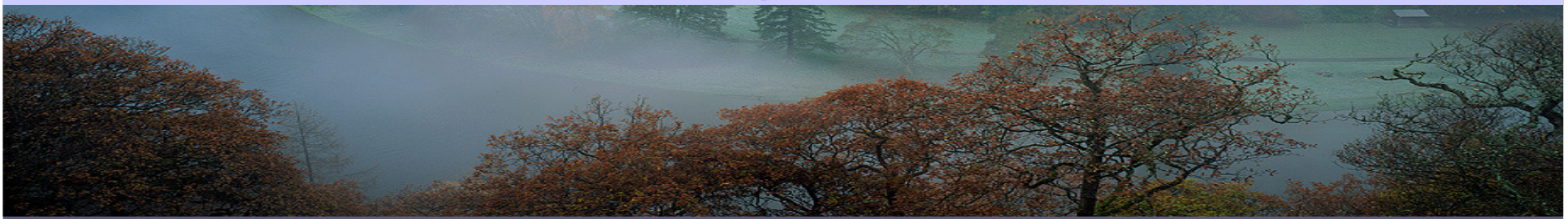
Moving towards our own goals and projects (1999 –2008)

Catalyst of the potential of major funding – the Heritage Lottery Fund (phases i and ii):

The Big Challenge (i)...to formalise a group, become a company

TWEED RIVERS HERITAGE PROJECT

To conserve, enhance and raise awareness of the natural, built and cultural heritage of the rivers and valleys of the Tweed catchment and develop the recreational opportunities and quality of life in the region.



Phase 2 – the limited company (a)

TWEED RIVERS HERITAGE PROJECT

New role as facilitator to bring together the wishes of a wide range of groups across the catchment;

- Established catchment-based organisations led 4 topic groups (**built & cultural; education & interpretation; access & recreation; natural heritage**)
- Identified some 63 potential projects – reduced to 22 for application to HLF
- unequal partners – **leaders individual believers** in major organisations, match funding challenges
- seed-corn funding vital – private company & landfill tax (Northumbrian Water)

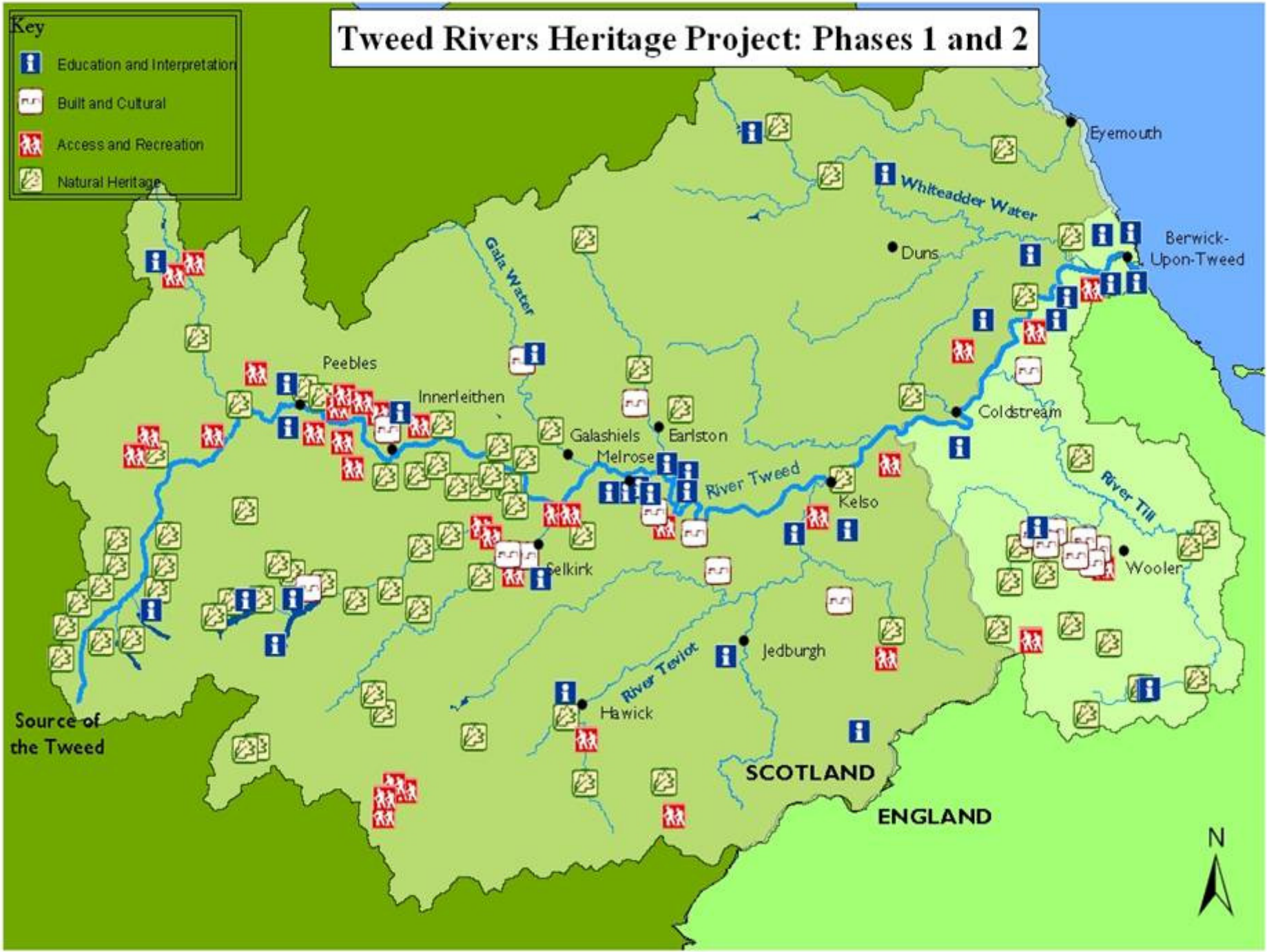
TWEED RIVERS HERITAGE PROJECT

- **£9 million with £4 million from HLF (45%) over 2 phases.**
- **Cash match funding from over 60 different sources**
- **In kind funding worth just under £1 million**
- **Tweed Forum core funding was a part of the project and funded by HLF to 70%**

Tweed Rivers Heritage Project: Phases 1 and 2

Key

-  Education and Interpretation
-  Built and Cultural
-  Access and Recreation
-  Natural Heritage



Phase 2 – the limited company (b)

Moving towards our own strategy

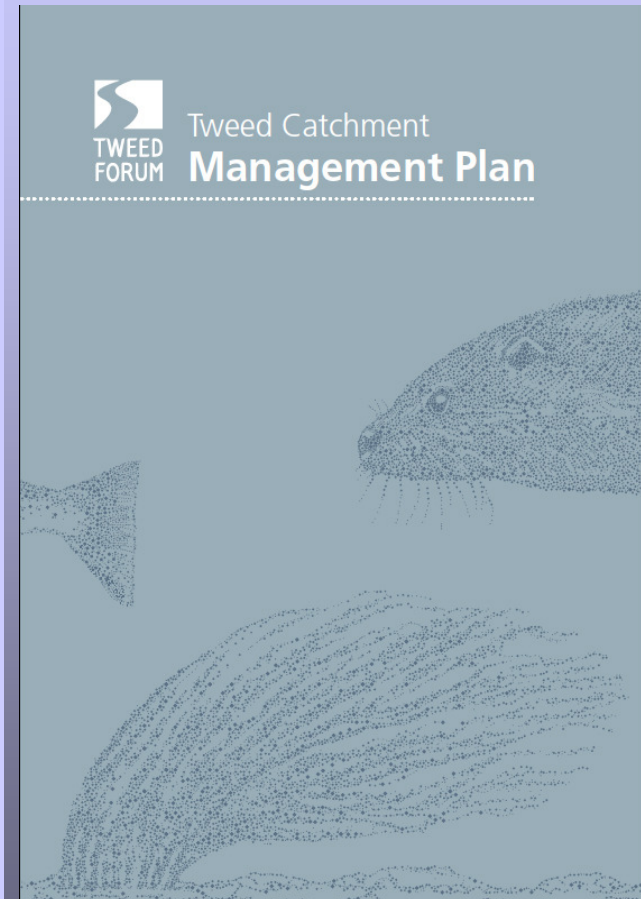
(1999 –2008)

Catalyst of the potential of major funding
– the Heritage Lottery Fund (two phases)

The Big Challenge (ii)...to become a
strategic catchment player

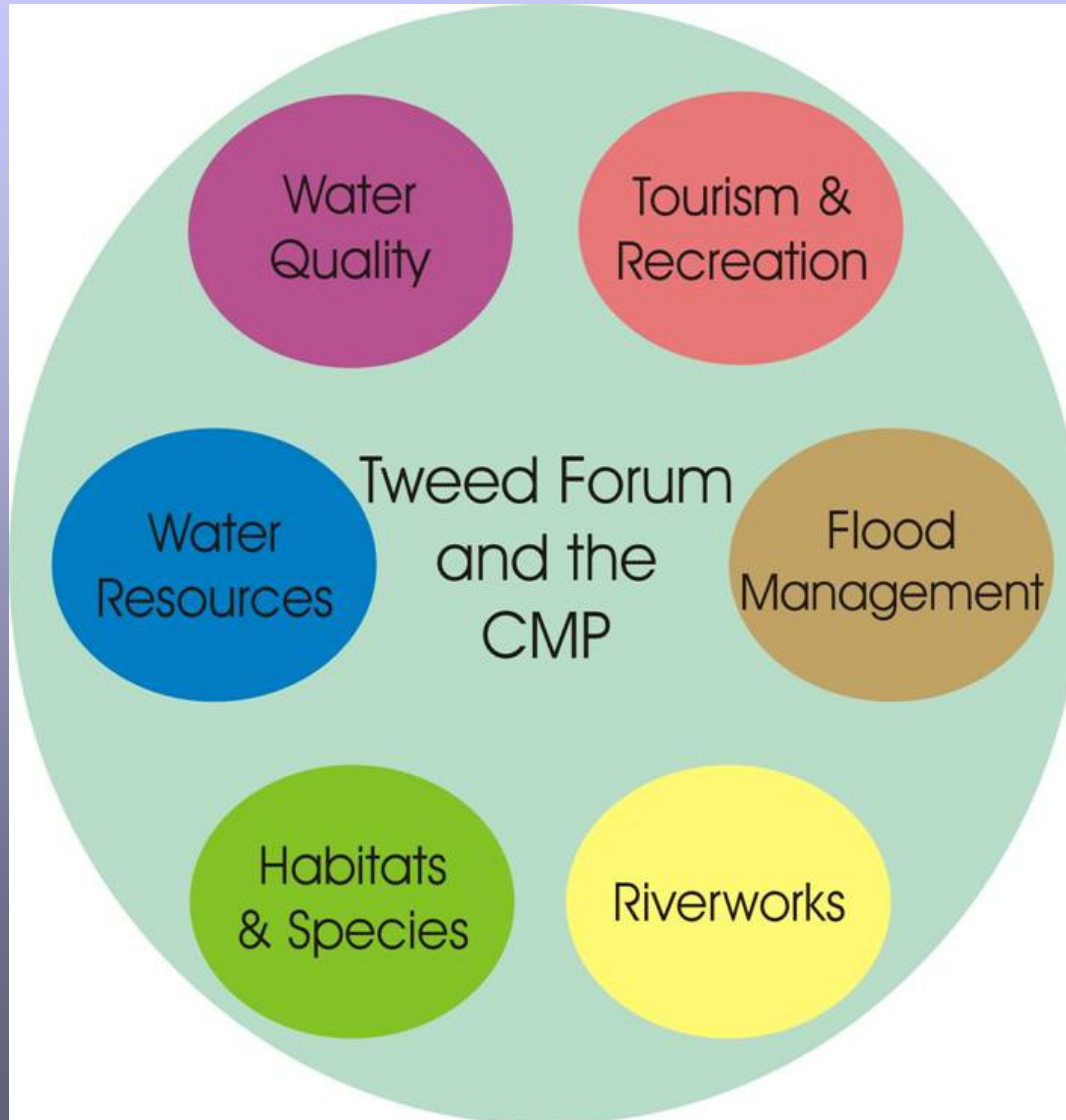
New role as strategic leader for catchment management:

- 2002 - appointed a Project Officer to develop a
**Tweed Catchment Management
Plan (CMP)**



Tweed Forum Catchment Management Plan

1st Plan launched 2003



- **Carried out detailed catchment-wide local consultation – 11 public evening meetings, leaflets, press coverage**
- **Themes developed by a series of working groups**
- **Draft CMP reviewed by local organisations**
- **CMP reviewed in 2005 and again in 2009 by Forum membership**

Phase 3 – the stakeholder “institution”

Tweed Forum of today: (2008 -)

Increasingly recognised by others as a powerful “institution” – a local stakeholder led non-governmental organisation (NGO), devoted to catchment management

Forum’s Enhanced role: sitting between and alongside the statutory bodies and the local communities on Tweed:

- Delivering the Tweed Catchment Management Plan (CMP)
- Delivering the Water Framework Directive Area River Basin Management Plan
- Facilitating and enabling the work of others as a trusted independent voice

Who *TWEED* *FORUM* is.....

GOVERNMENT DEPARTMENTS AND AGENCIES

Department for the Environment,
Food and Rural Affairs
Environment Agency
Forestry Commission Scotland
Natural England
Scottish Environment Protection
Agency
Scottish Government
Scottish Natural Heritage
Scottish Water
Scottish Enterprise Borders
Visit Scotland

PRIVATE / VOLUNTARY SECTOR

Borders Anglers Federation
Borders Forest Trust
Farming and Wildlife Advisory Group
Northumbrian Water
Northumbrian Wildlife Trust
River Tweed Commissioners
Royal Society for the Protection of
Birds
Scottish Agricultural College
Scottish Borders Rural Partnership
Scottish Rural Property and Business
Association
Scottish National Farmers Union
Southern Uplands Partnership
Tweed Foundation

LOCAL AUTHORITIES

Berwick upon Tweed Borough Council
Northumberland County Council
Northumberland National Park Authority
Scottish Borders Council

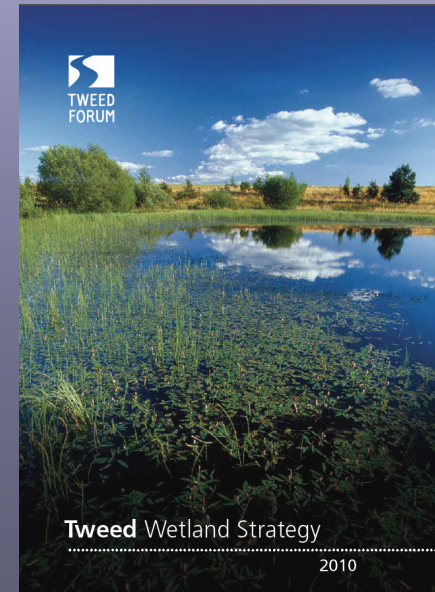
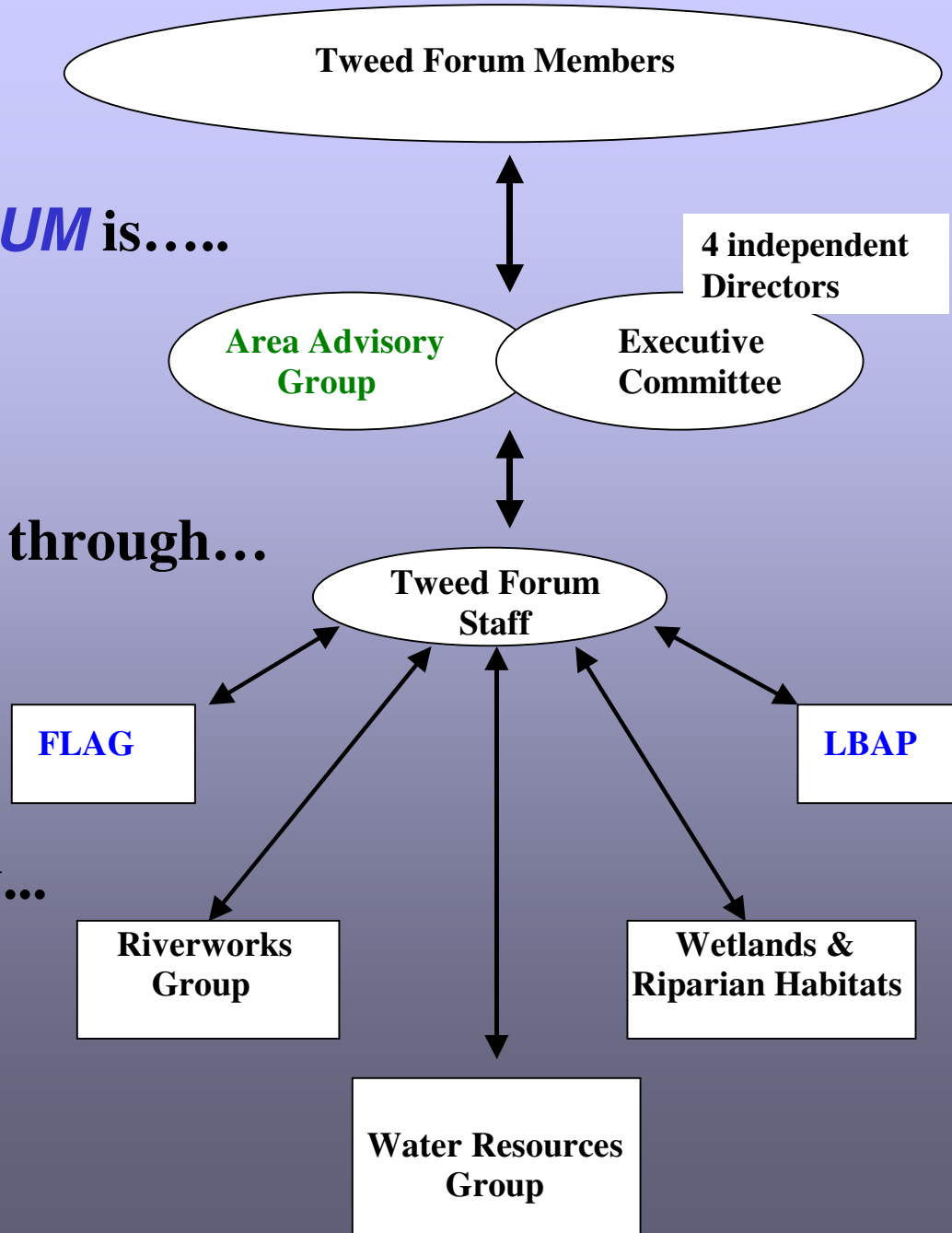
Governance

Structure:

TWEED FORUM is.....

..and operates through...

..supported by...





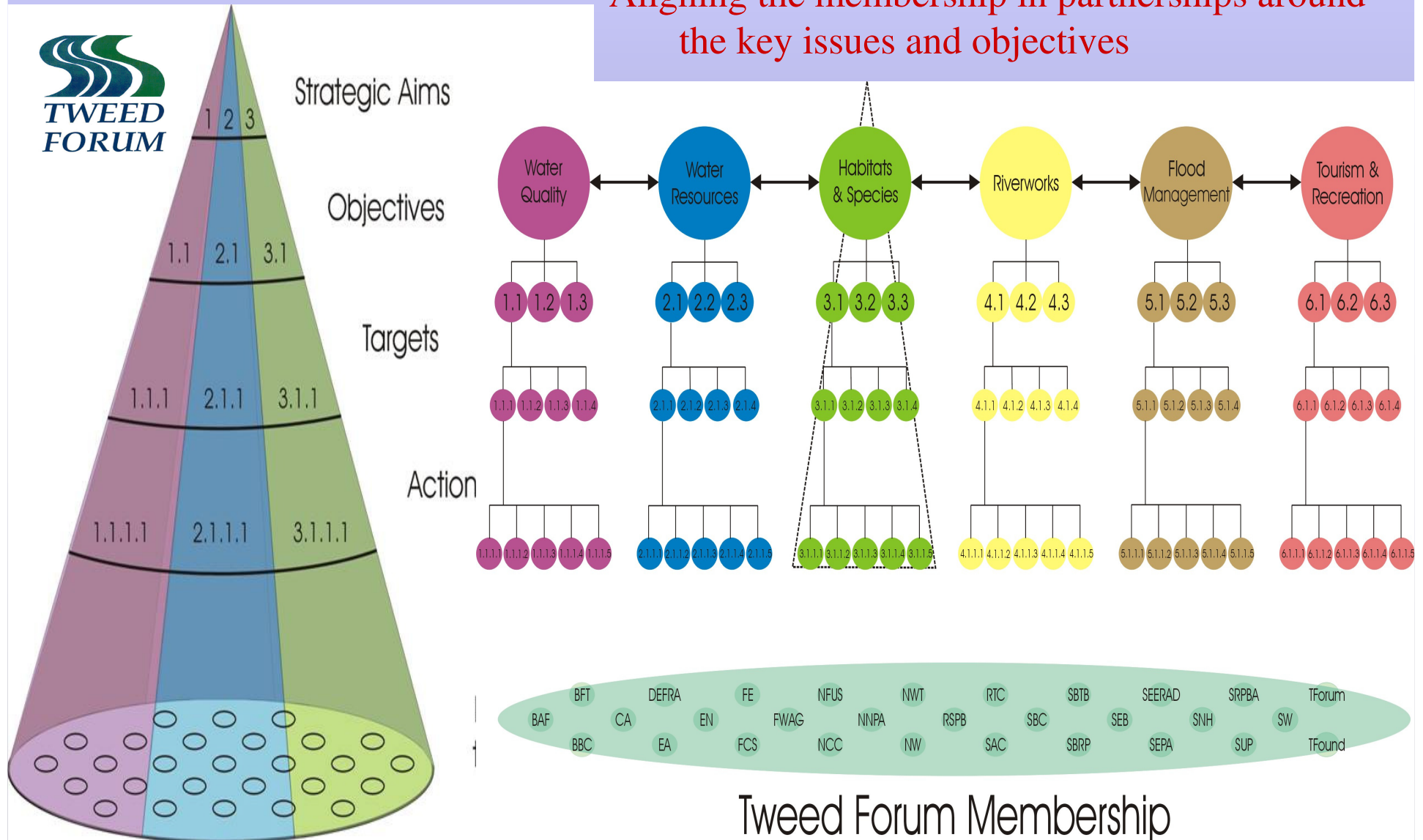
TWEED FORUM - What we do

“to promote the wise and sustainable use of the whole Tweed catchment through holistic and integrated management and planning”.

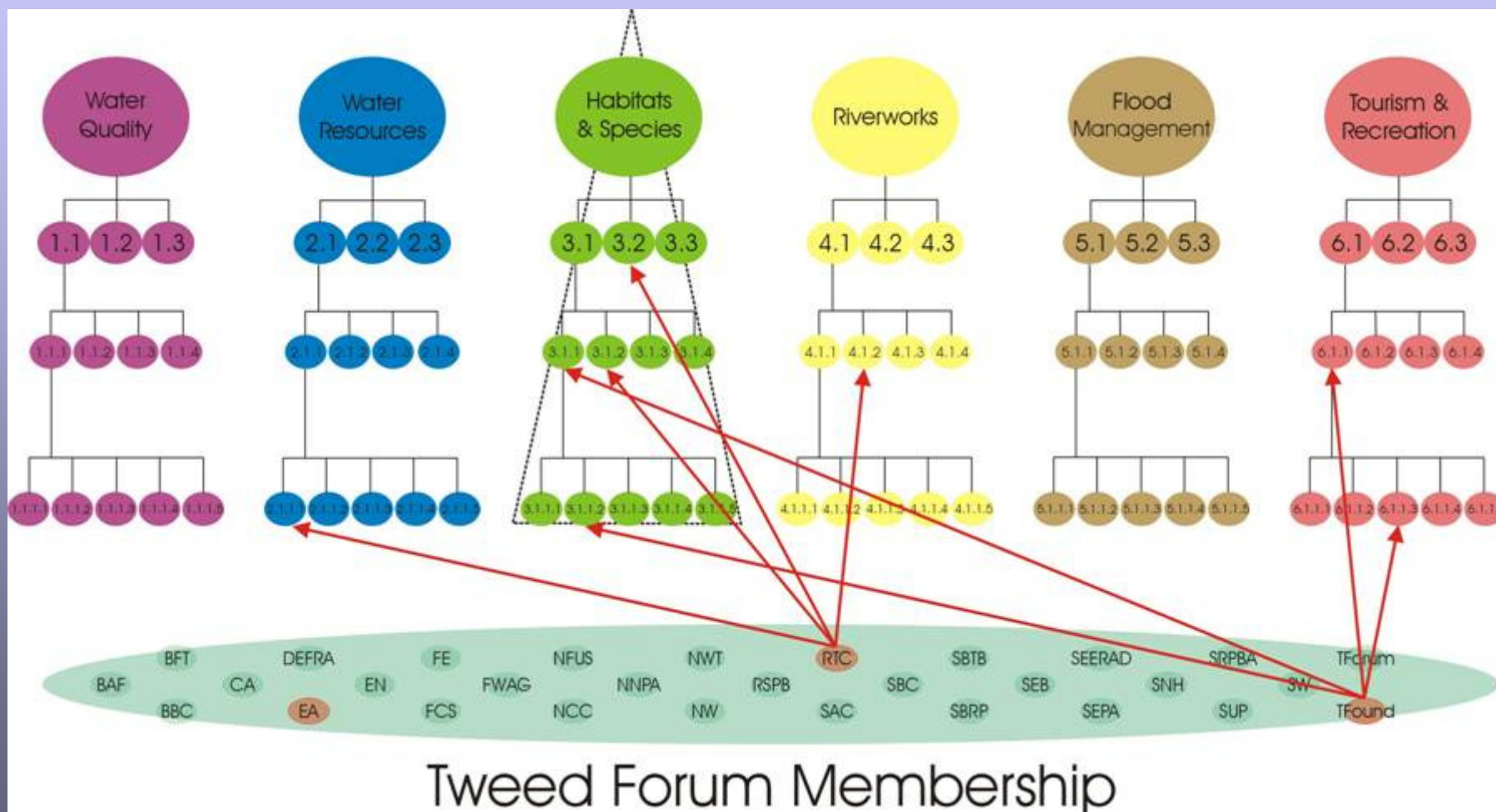
How we do it

THE CATCHMENT MANAGEMENT PLAN AND THE ROLES OF TWEED FORUM

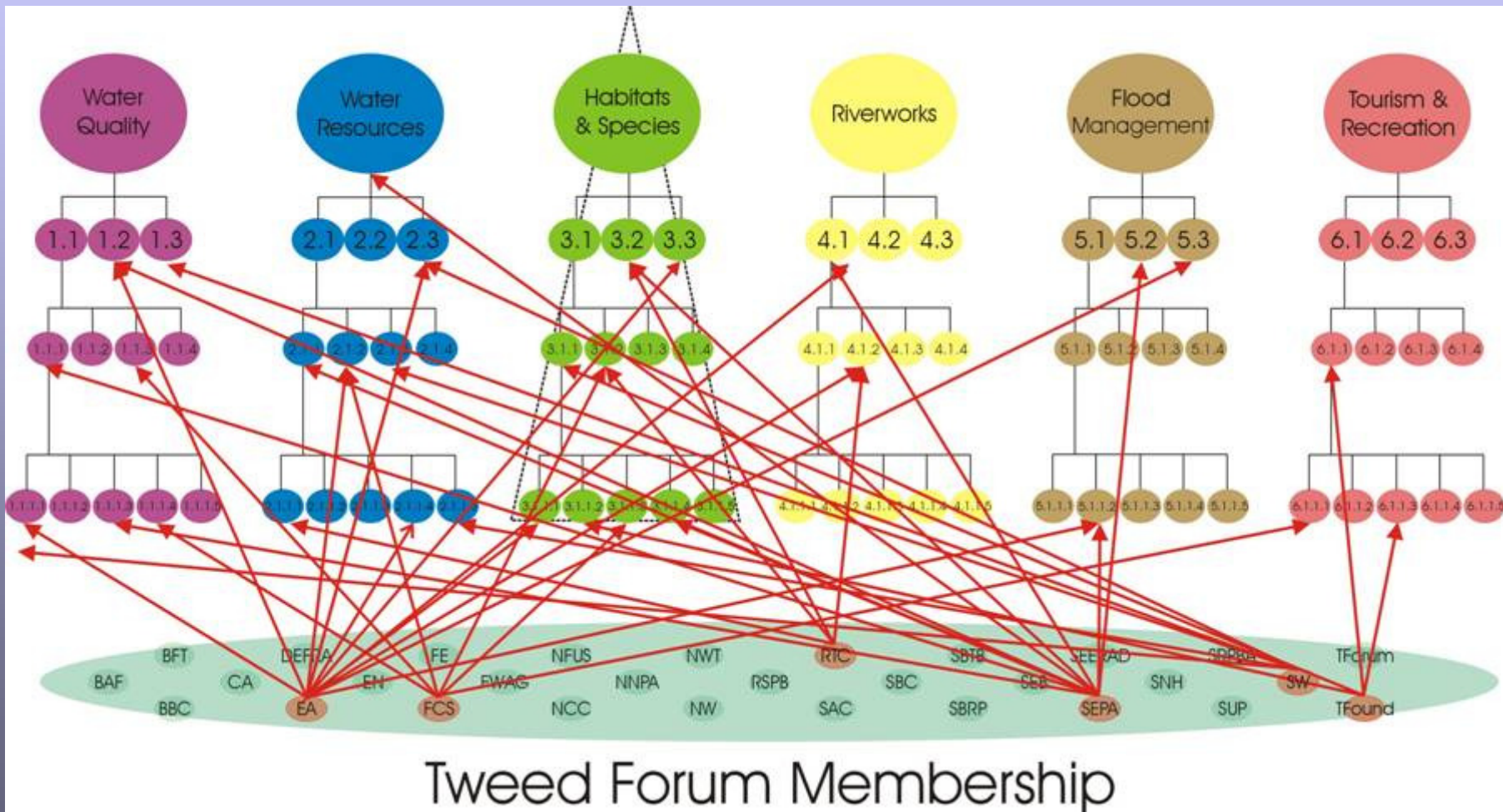
Aligning the membership in partnerships around the key issues and objectives



Individual members identified for their contribution to actions



Builds in to a multiple partnership programme



Key Role: empowering community stakeholders

➤ **Facilitating and Enabling**

- Mediator/Honest Broker – defuse potential conflicts
- promote integration, coordination and cooperation
- pool resources and secure funding

➤ **Seizing Opportunities**

➤ **Filling Gaps**

- encourage others to action, or
- taking direct action

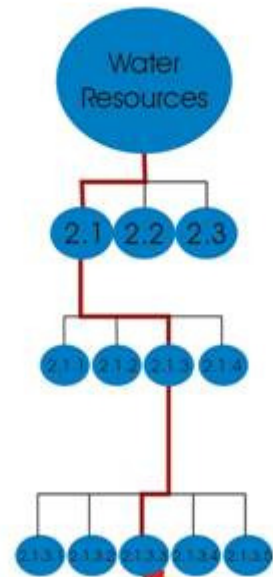
➤ **Communicating**

- improve flow of information
- articulate and promote collective aims and objectives

Bringing people together to resolve issues:



Enabling & Facilitating Reservoir Releases



•Bringing people together around **Flood Management issues:**

•Conflict resolution and future scenario planning

•Sustainable Flood Management; Research, demonstrations, pilots and action – e.g. Eddleston Water



Till Wetland Restoration Project

Cheviot Futures is unique in the UK, providing practical measures to help farmers and land managers adapt to climate change.

For more information about how Cheviot Futures is working to achieve a more resilient rural community and to hear about the projects we are involved in visit our website: www.cheviotfutures.co.uk or e-mail: info@cheviotfutures.co.uk

Alternatively you can contact one of our spokespeople below:

Peter Kerr
Environment Agency
Tel : 0191 2034062
peter.kerr@environment-agency.gov.uk

Elizabeth Bunting
Environment Agency
Tel : 0191 2034065
elizabeth.bunting@environment-agency.co.uk

Lydia Speakman
Natural England
Tel : 0191 2293091
lydia.speakman@naturalengland.org.uk

Andrew Miller
Northumberland National Park Authority
Tel : 01669 622 079
andrew.miller@nmpa.org.uk

Luke Comins
Tweed Forum
Tel : 01896 849723
luke.comins@tweedforum.com

For a full list of Cheviot Futures partners please visit our website.

Cheviot Futures is part funded by the Northumbria Regional Flood Defence Committee.

This leaflet is made from re-cycled stock.
Also funded by:

The European Agricultural Fund for Rural Development
Europe investing in rural areas.

We know that climate change will pose some significant challenges for communities in the future, but what are they and how can we address them?

real-world solutions for climate change

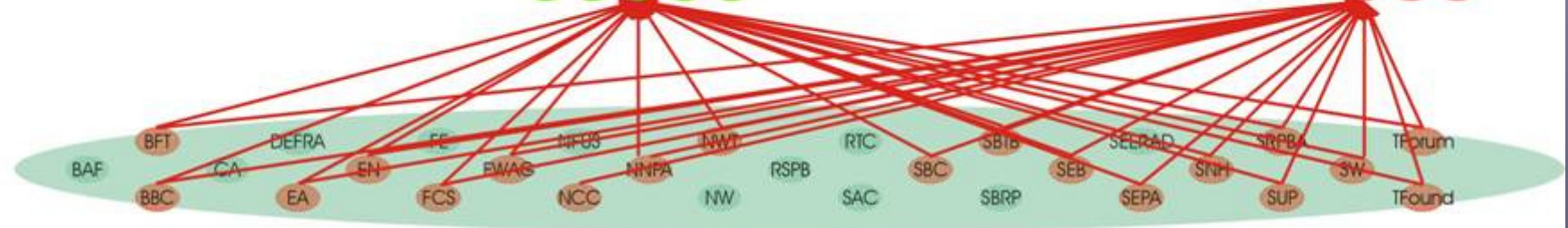
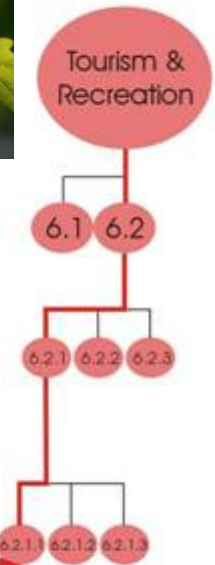
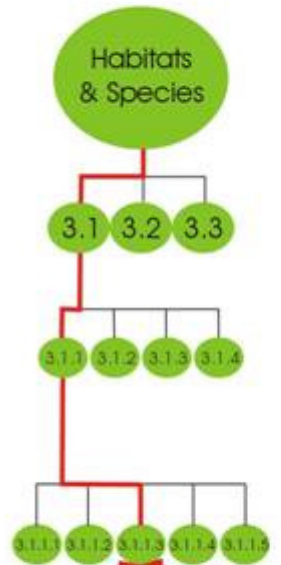
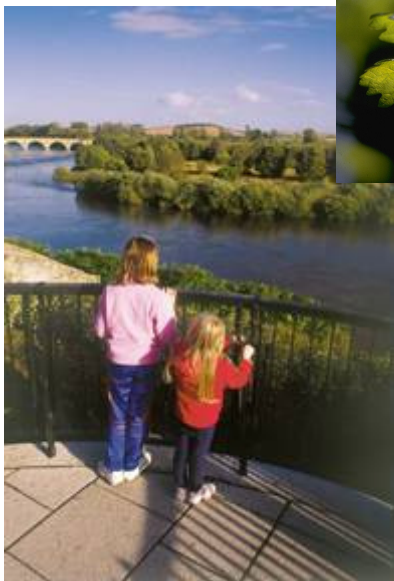


Bowmont/Glen Flood management

Match-making partners to access funds and opportunities



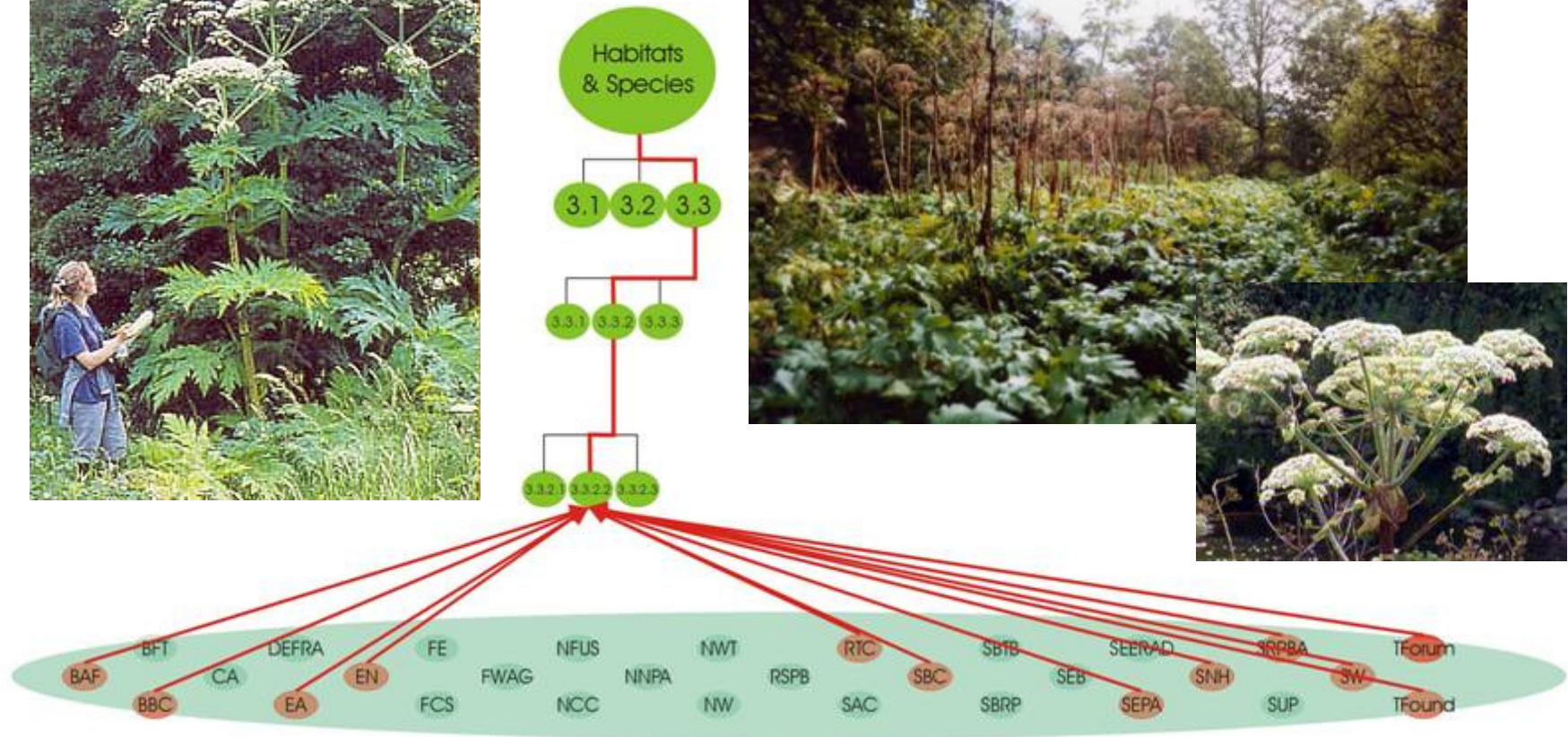
Seizing Opportunities Tweed Rivers Heritage Project



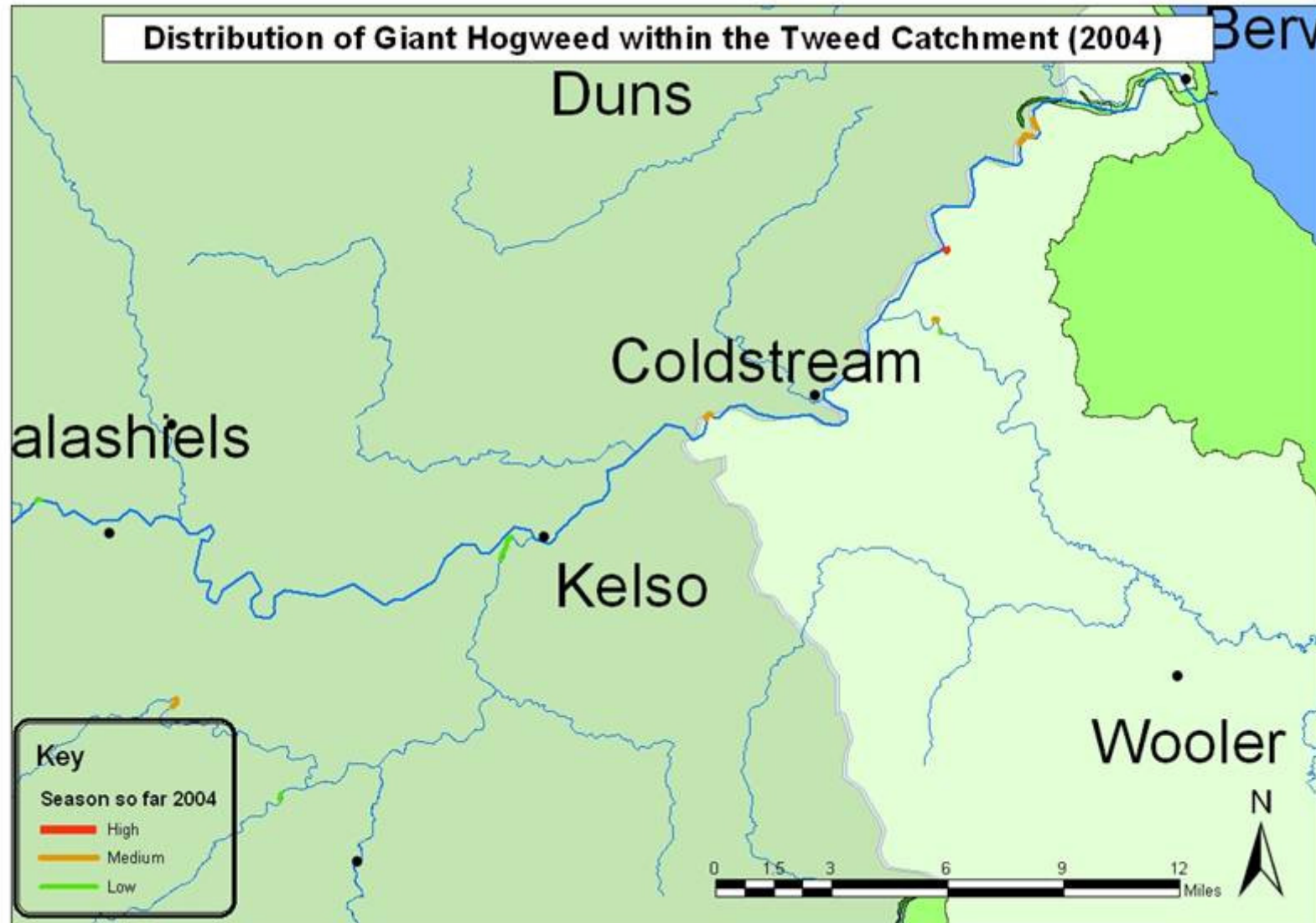
Resolving stakeholder issues where no clear statutory lead exists



Gap Filling Invasives



A comparison of flowering Giant Hogweed plants before and after the start of the Tweed Invasives Project.



The relationship with the Water Framework Directive (WFD) and river basin management planning:

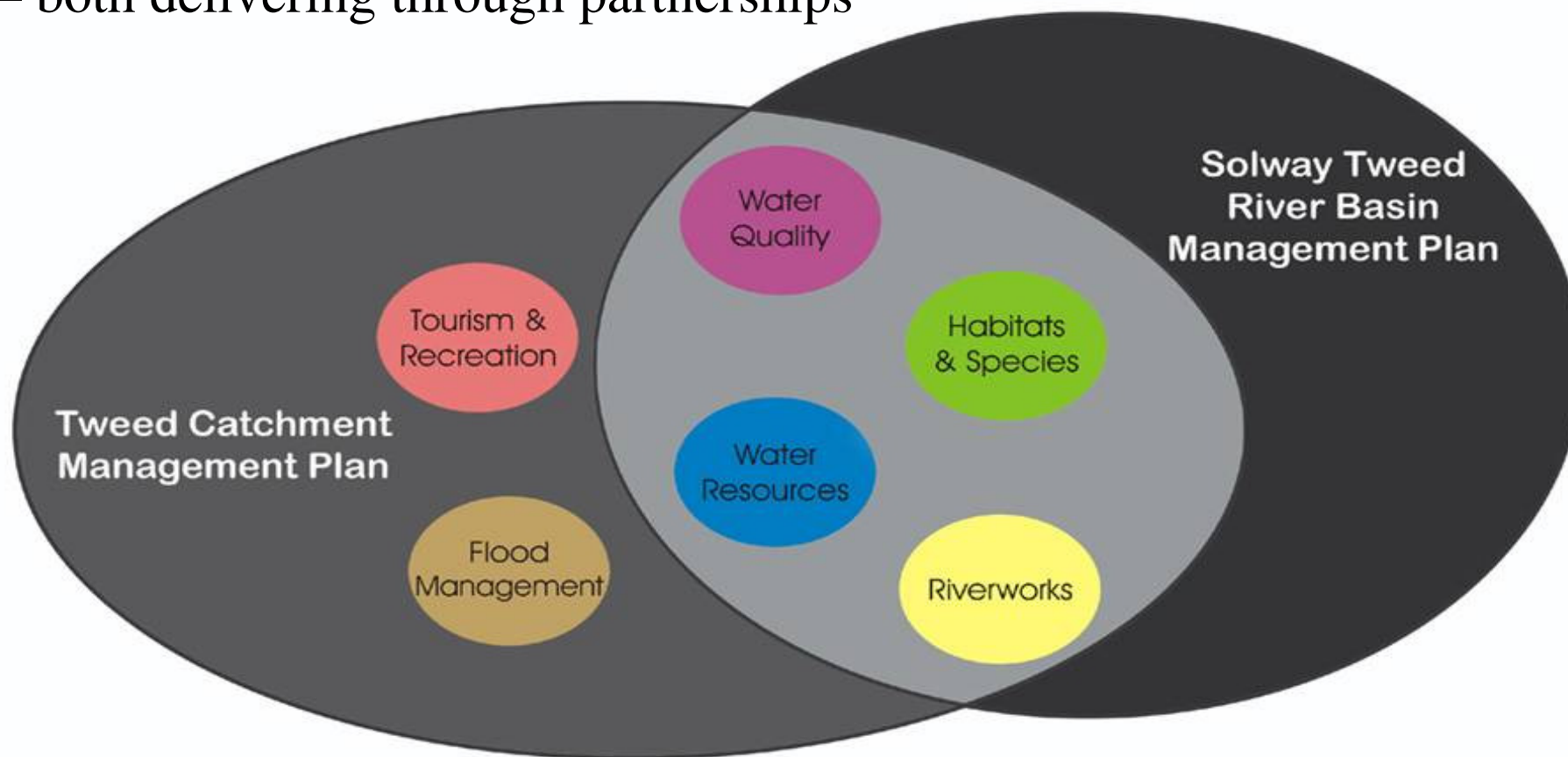
Governance:

- Stakeholder participation in WFD river basin management planning through the Advisory Groups (national and area)
- Uniquely, Tweed Forum is used as the Area Advisory Group for Tweed area
- Effective stakeholder engagement already there
- Helps integrate RBMP with Tweed CMP
- Ensures regulatory regimes meet in the middle
- Using Tweed Forum technical groups to resolve specific issues and promoting best practice



Voluntary and Statutory river basin management plans:

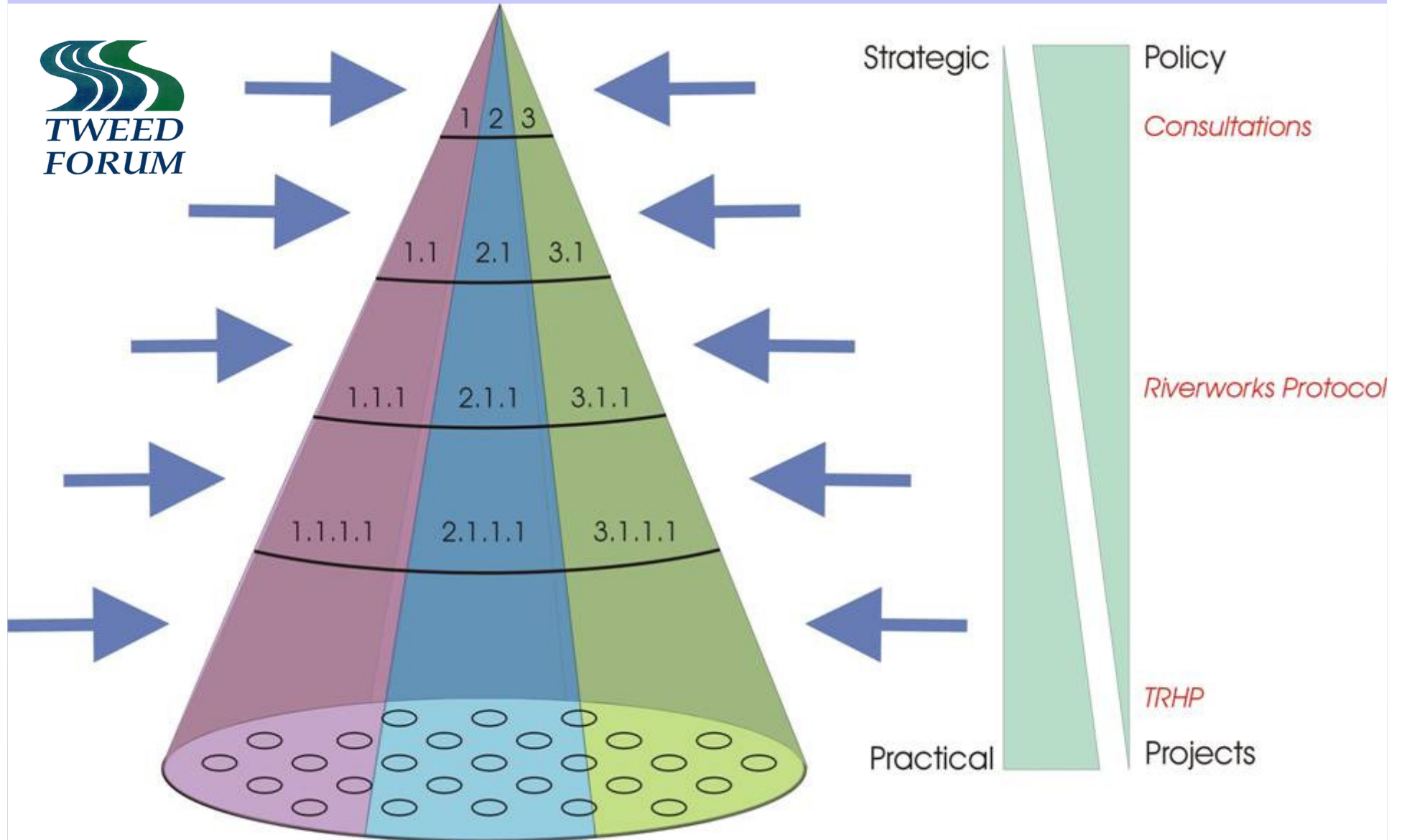
– both delivering through partnerships



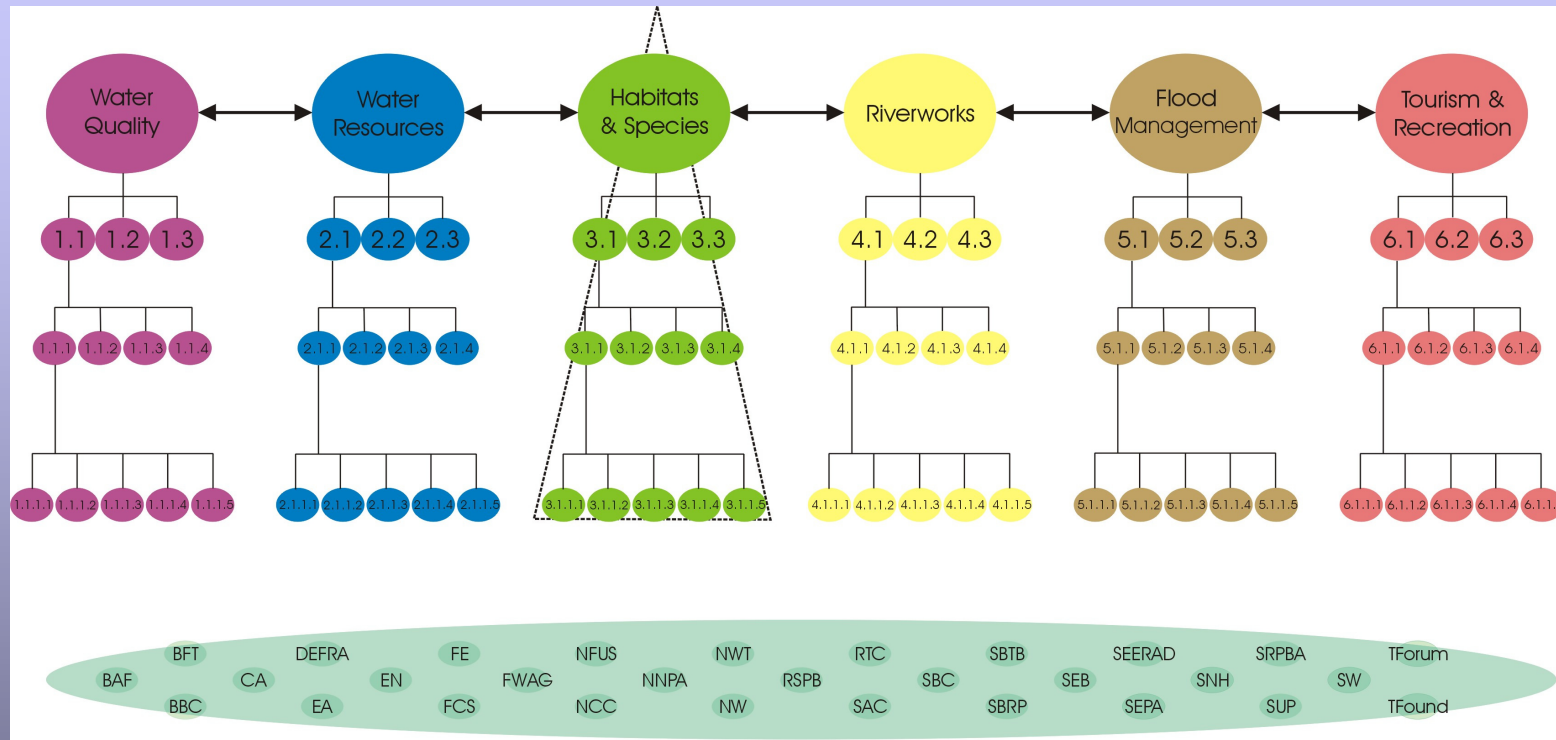
Bottom up community role

Top down regulatory framework

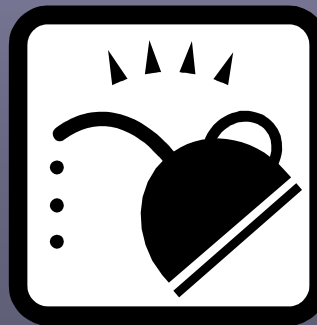
Tweed Forum increasingly moving from issues to strategy



Tweed Forum as the glue, the oil and the fuel for effective river management – founded on effective governance at local level



Tweed Forum Membership



Future: - river restoration work, helping address significant water issues and working towards the ultimate goal of WFD – ‘good ecological status’



...alongside community priorities for land management improvements, river restoration, invasive species control, access, tourism, recreation, diffuse pollution projects, floodplain restoration, sustainable flood management, fisheries.....